

INSTALLATION INSTRUCTIONS

WAVE™

SMART ELONGATED TOILET BIDET SEAT

#STS1W



CONTENT

INSTALLATION

IMPORTANT SAFEGUARDS	3
TECHNICAL SPECIFICATION	5
PACKING LIST	6
MAIN UNIT KNOB & SIDE BUTTON INSTRUCTIONS	7
PARTS IDENTIFICATION	8
PRODUCT SIZE & PREPARATION	9
INSTALLATION OF MAIN UNIT	10
PREPARATIONS FOR START-UP	11

MAINTENANCE

DAILY MAINTENANCE	
SEAT MAINTENANCE	12
NOZZLE MAINTENANCE	12
FILTER MAINTENANCE	12
SELF-CLEANING WATERWAY MAINTENANCE	13
DEODORIZING DEVICE MAINTENANCE	13
REMOVAL AND INSTALLATION OF CLAMP	13
TRUBLESHOOTING GUIDE	14

IMPORTANT SAFETY GUARDS

READ ALL INSTRUCTIONS BEFORE UNPACKING THE PRODUCT

When using electrical products, especially when children are present, basic safety precautions should always be followed, including the following:

The appliance is not to be used by persons (including children) with reduced physical, sensory or mental capabilities, or lack of experience and knowledge, unless they have been given supervision or instruction.

Children being supervised not to play with the appliance.

This appliance can be used by children from 8 years and older and people with reduced physical, sensory or mental capabilities or lack of experience and knowledge if they have been given supervision or instruction concerning use of the appliance in a safe way and understand the hazards involved.

Children shall not play with the appliance.

Cleaning and user maintenance shall not be made by children without supervision.

DANGER!



To reduce the risk of electrocution:

1. Do not use while bathing.
2. Do not place or store product where it can fall or be pulled into a tub or sink.
3. Do not place in or drop into water or other liquid.
4. Do not reach for a product that has fallen into water. Unplug immediately.
5. Do not wash the main unit or electrical plug with water or detergent.
6. Do not handle the electrical plug with wet hands.
7. Do not put a hand or other staff over the outlet of air dryer or block the outlet of air dryer.
8. Never disassemble, repair or modify this product.
9. During installation, disassembly, repair and maintenance of the product, the power plug must be switched off and water supply be shut off.

CAUTION!



To reduce the risk of burns, fire, or injury to persons.

1. Close supervision is necessary when this product is used by, on, or near children or invalids.
2. Use this product only for its intended use as described in this manual book. Do not use attachments not recommended by the manufacturer.
3. Never operate this product if it has a damaged cord or plug, if it's not working properly, if it has been dropped or damaged, or dropped into water.
4. Keep the cord away from heated surfaces.
5. Never use while sleeping or drowsy.
6. Never drop or insert any object into any opening or hose.
7. Do not use outdoors or operate where aerosol (spray) products are being used or where oxygen is being administered.
8. Connect this product to a properly grounded outlet only. See Grounding Instructions.
9. Do not throw cigarettes and other burning stuff into toilet, otherwise it might cause fire.
10. This product is electric appliance, it must be placed far away from water. Please don't drench urine and other liquid to it.
11. It is prohibited to use other electric appliances in the same socket.
12. It is forbidden to use the power extension or unstable loose outlet.
13. The old aging water supply hose can not be used, otherwise it might cause leakage, fire or electrical shock. Installation of the bidet seat should include specified components and new water supply hose.

IMPORTANT SAFETY INSTRUCTIONS

CAUTION!



Indicates that failure to follow the instruction may cause body injury or property damage

1. Do not install or use this product in wet places as steam room etc.
2. It is recommended to use Tamper-Resistant Self-Test GFCI Outlet. 110V-120V, 50/60Hz 15A. Power plug must be equipped with ground fault circuit interrupter.
3. When it thunders, it is strongly recommended to unplug.
4. Do not stand on ceramic toilet.
5. Ceramic toilet must install floor fixing bolt.
6. Do not stand on product unit, seat and cover.
7. This product is equipped with soft-closing seal cover. Heavy pressing, pushing or leaning against the seat cover when using the product, may damage the soft-closing damper.
8. Do not use sharp detergent, toilet cleanser and scrubbing brush to clean the product.
9. Exposure to direct sunlight is prohibited.
10. Only use tap water or potable water; otherwise it may cause chafing.
11. Do not connect water supply to heater outlet. Make sure inlet water temperature at 37-95 F°.
12. When the room temperature is under zero degree, please dry up the water tank, to avoid freezing.
13. Raise rest room temperature to prevent the toilet from damage due to freezing.
14. When move the product from cold or wet environment into normal room temperature, wait for 2 hours until the condensation water is fully volatilized. Doing so can prevent the product from electrical short-circuit.
15. When not using the product over 3 days, drain the water out of the container and unplug from the wall outlet.
16. Stop using the product and shut off the power when product malfunctions.

GROUNDING INSTRUCTIONS

This product should be grounded. In the case of an electrical short circuit, grounding reduces the risk of electric shock by providing an escape wire for the electric current. This product is provided with a cord having a grounding wire with a grounding plug. The plug must be plugged into an outlet that is professionally installed and grounded.

DANGER – Improper use of the grounding plug can result in a risk of electric shock.

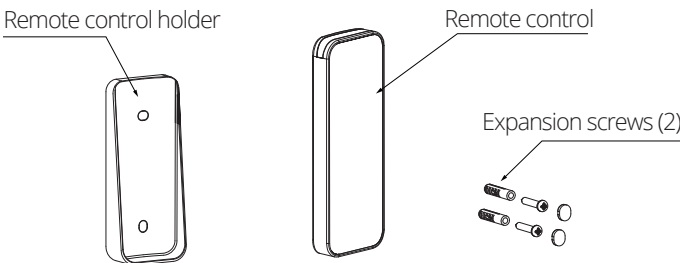
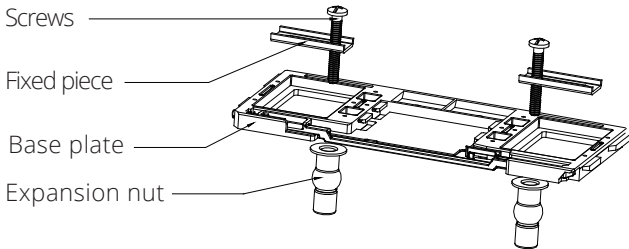
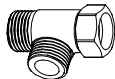

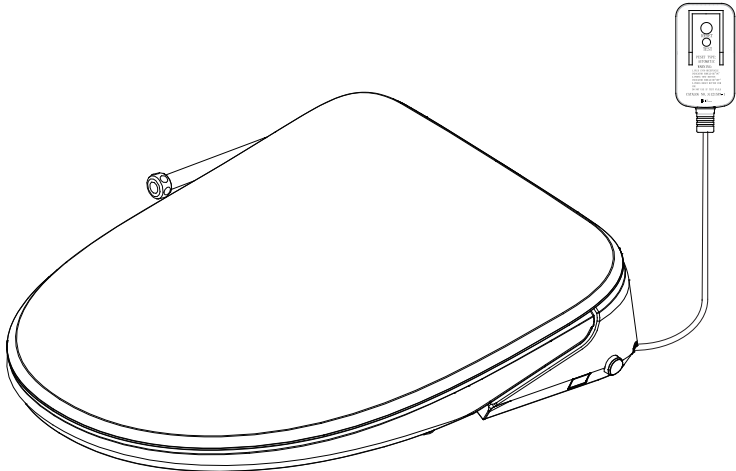
If repair or replacement of the cord or plug is necessary, do not connect the grounding wire to either flat blade terminal. The cable with insulation having an outer surface that is green with or without yellow stripes is the grounding wire.

This product is factory equipped with a specific electric cord and plug to permit connection to a proper electrical circuit. Make sure that the product is connected to an outlet having the same configuration as the plug. No adapter should be used with this product. Do not modify the plug provided if it will not fit the outlet, have the proper outlet installed by a qualified electrician. If the product must be reconnected for use on a different type of electric circuit, the reconnection should be made by qualified service personnel.

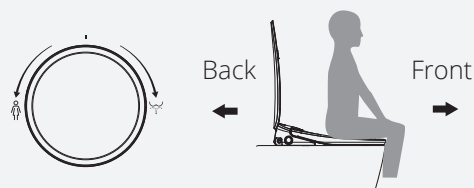
TECHNICAL SPECIFICATION

Main Unit	Rated Voltage	110V-120V, 50/60Hz
	Rated power	960W
	Water pressure range	The minimum necessary pressure 0.08MPa (hydrostatic pressure), the maximum water pressure 0.8MPa (hydrostatic pressure)
	Power cord	length is about 1.2m
Cleaning device	Heating power	1400W(120V)
	Water temperature	6 different level adjustment
	Water volume	5 different level adjustment
	Cleaning mode	Rear cleaning / Massage cleaning, Front cleaning/Massage cleaning, Strong and weak washing (if applicable), Warm and cold cleaning (if applicable)
	Nozzle position	5 different level adjustment
	Water pressure protector	Pressure stabilizer, Automatic pressure discharging
	Anti-fouling device	Speedy water discharge device, Automatic cleansing nozzle, Anti-syphon device, Anti-backflow device, Filter device
	Safety device	Temperature sensor, fail safe device, Bimetallic thermostat, Temperature fuse, Grounding protection, Leakage protector
Drying device (If Applicable)	Warm wind speed	Over 0.2m ³ /min
	Warm wind temperature	6-level wind temperature adjustment
	Heating power	200W
	Safety device	High temperature preventer, thermal fuse
Deodorization	Deodorization Method	None Photocatalyst
Heated Seat	Surface temperature	6 different level adjustment
	Heating power	50W
	Open and close device	Quiet soft-closing device
	Heated burning protection	The seat temperature will automatically lower down to level 1 in 10 minutes after using
	Safety device	Seat sensor, Temperature sensor, Bimetallic thermostat, Temperature fuse
Caring device	Night light assembly	Intelligent, often in the off state
	User ID setting	To avoid disturbance from remote controls by multi-user
	Noise-free setting	The buzzer is off at night to avoid buzzer noise and to guarantee a quiet environment at night
	Auto lid open/ close (optional)	Intelligent lid open/close or by remote controller
Others	Sterilization device (If Applicable)	Plasma sterilization device
	Antibacterial position	Seat, Nozzle

PACKING LIST

The remote control assembly	1. Remote control	 <p>Remote control holder</p> <p>Remote control</p> <p>Expansion screws (2)</p>
	2. Remote control holder	
	3. Expansion screws (2)	
Base plate assembly	1. Base plate	 <p>Screws</p> <p>Fixed piece</p> <p>Base plate</p> <p>Expansion nut</p>
	2. Screws (2)	
	3. Fixed piece (2)	
	4. Expansion nut (2)	
The filter assembly	Tee - joint (1)	 <p>Tee - joint</p>
Manual, Certificate of quality, Mounting Cardboard	Manual	 <p>Manual</p> <p>Certificate of quality</p> <p>Mounting Cardboard</p>
	Certificate of quality	
	Mounting Cardboard	
Main unit		

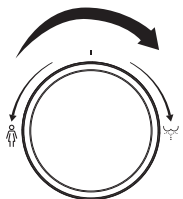
MAIN UNIT KNOB INSTRUCTIONS (KNOB ACTIVATION)



Rear Cleaning Knob

1. When user is seated, turn Rear Cleaning Knob forward to start rear cleaning function; Rear cleaning, Drying, Stop drying automatically.

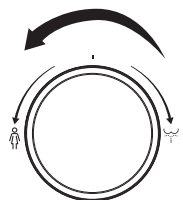
2. During rear cleaning process, turning the knob forward/rearward will move the washing position forward/rearward.



Front Cleaning Knob

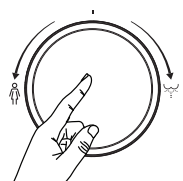
1. When user is seated, turn Front Cleaning Knob backwards to start front cleaning function; Front cleaning, Drying, Stop drying automatically.

2. During front cleaning process, turning the knob forward/rearward will move the washing position forward/rearward.

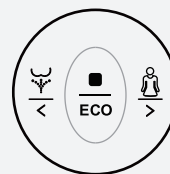


Stop Knob

Press the knob to stop the function in progress: rear cleaning, front cleaning, drying or nozzle cleaning function.



MAIN UNIT SIDE BUTTON INSTRUCTIONS (BUTTON ACTIVATION)



Rear Cleaning Button



1. When seated, short press Rear Cleaning button to start rear cleaning function. Rearcleaning, Drying, Stop drying automatically.
2. When rear cleaning function is on, long press Rear Cleaning button to activate massage cleaning function; long press again to stop massage cleaning function.
3. During the rear cleaning process, a short press on the Rear Cleaning button will move the washing position rearward.
4. To clean the nozzle, press the Rear Cleaning button while not sitting on unit. The spray wand will extend outward to allow access for cleaning.

Front Cleaning Button



1. When seated, short press Front Cleaning button to start front cleaning function. Front cleaning, Drying, Stop drying automatically.
2. When front cleaning function is on, long press Front Cleaning button to activate massage cleaning function; long press again to stop massage cleaning function.
3. During the front cleaning process, a short press on the front Cleaning button will move the washing position forward.

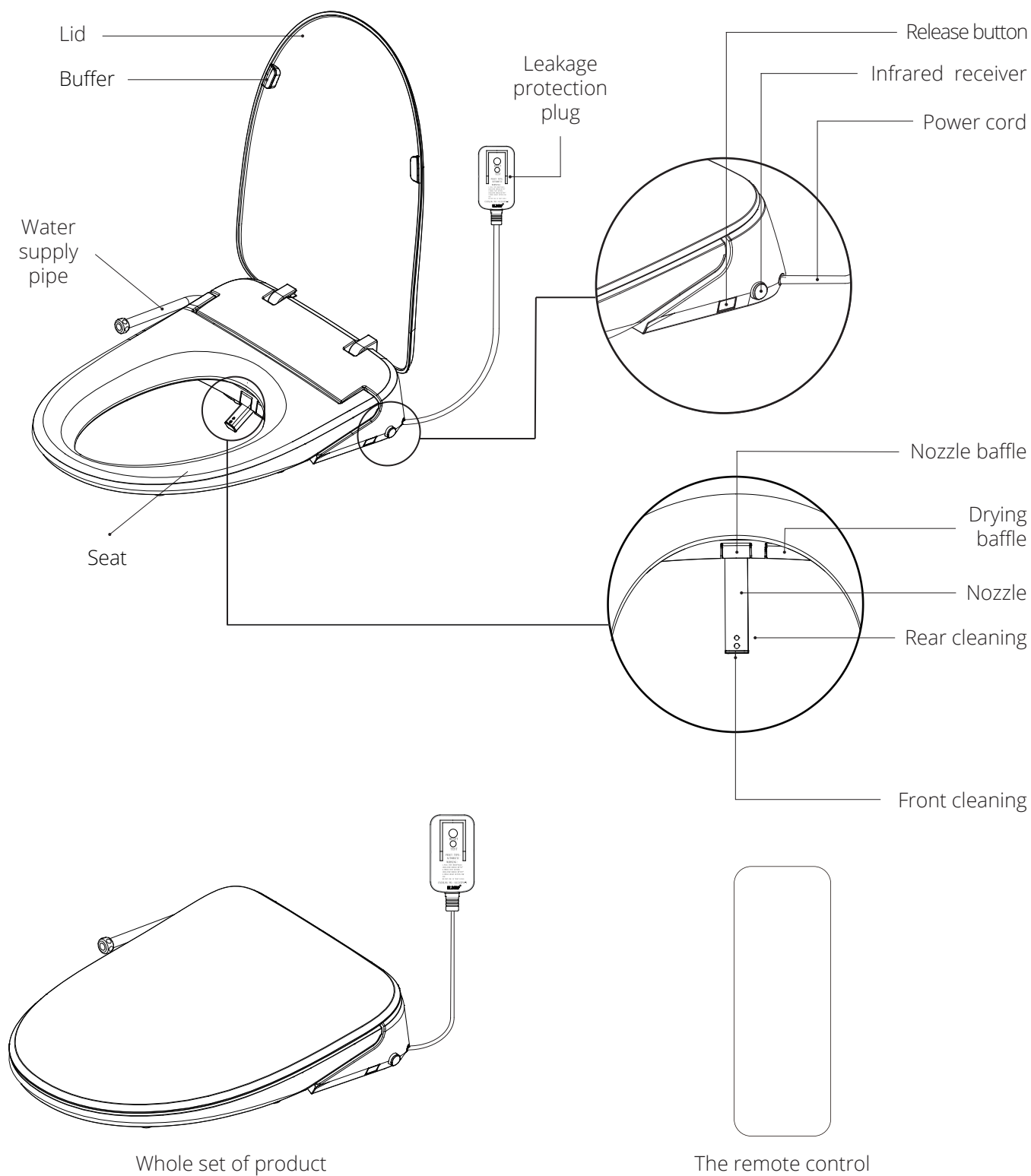
Stop Button



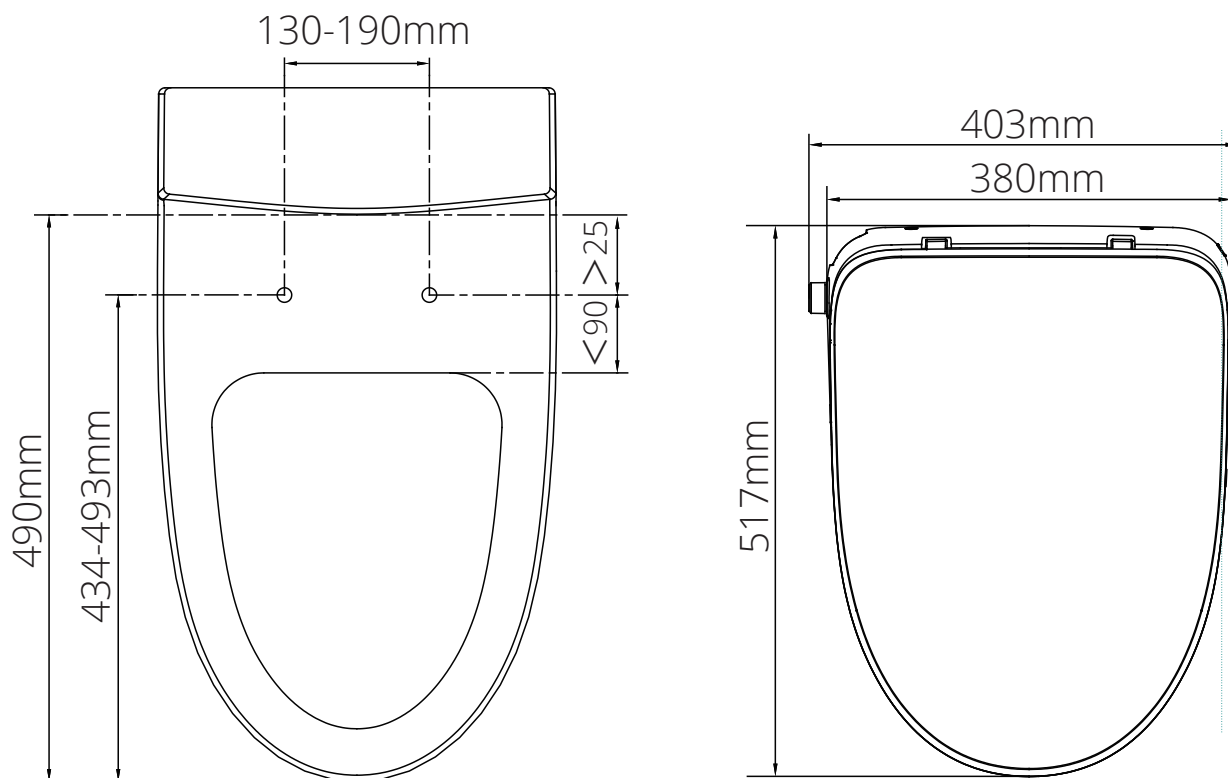
ECO

1. Long press Stop Button to make the main unit enter standby mode, press Stop Button again to make the main unit return to Operating mode. In Standby Mode, all functions and buttons (with the exception of the STOP button) will not operate.
2. When seated, a Short Press on the STOP button will stop any cleaning or drying function.
3. Pressing the STOP button while no one is seated will switch the unit into ECO mode. Pressing this button again will turn off the ECO mode.

PARTS IDENTIFICATION



PRODUCT SIZE & PREPARATION

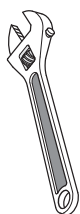


* Tips: Please confirm this seat fitting your current toilet.

TOOLS REQUIRED FOR INSTALLATION



Phillips
screwdriver



Wrench



Tape measure



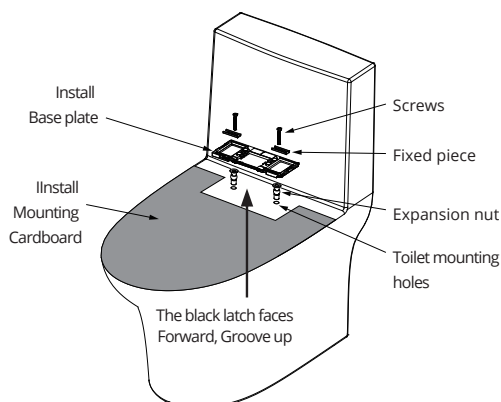
Cup

INSTALLATION OF MAIN UNIT

* This product has been tested for water flow before leaving the factory. There may be a small amount of residual water dripping out when removing the product, which is not a malfunction.

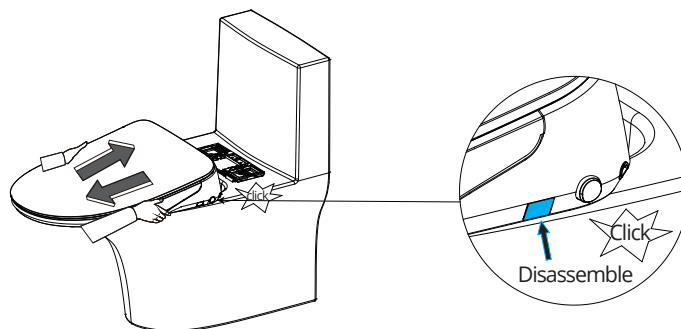
* Do not install this product in a wet place such as a bathroom, and do not put it in a place where it may come in close contact with water.

1 Installation of base



Install the expansion nuts into the toilet mounting holes first, and then install base plate, fixed piece and screws in sequence according to the above illustration, then tighten.

2 Installation & disassembly of Main Unit

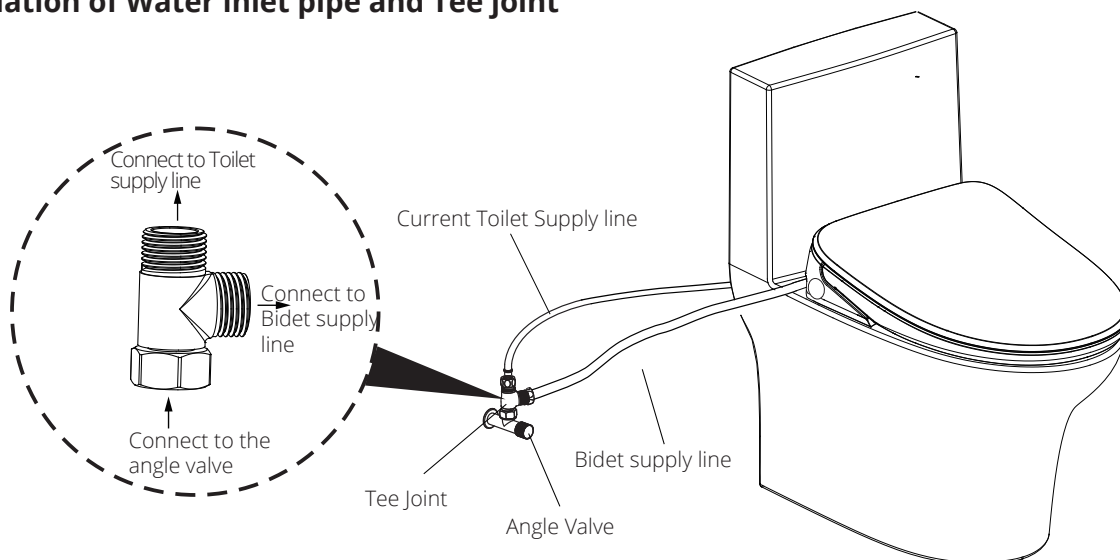


Installation of main unit: Align Main Unit to Base Plate and slide it into the Base Plate. The components will audibly "click" together when properly installed.

Removal of Main Unit: Press the "Removal button", and pull out the Main unit when a "click" sound is heard.

Note: Once the Removal Button is pressed, you do not have to hold it in during the removal process.

3 Installation of Water inlet pipe and Tee joint



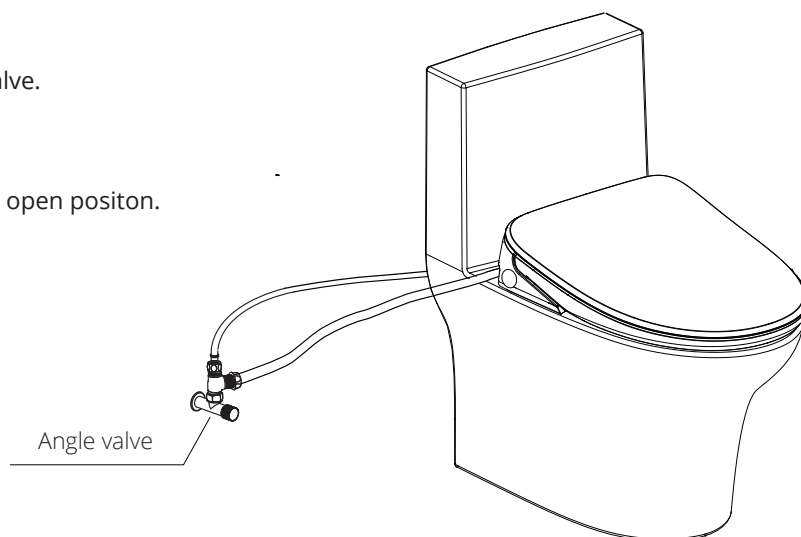
- ① Connect Tee joint to angle valve; (The original Tee joint should be removed);
- ② Connect the Toilet supply line to the Top Port of the Tee Joint according to the above illustration;
- ③ Connect the Bidet supply line to the Side Port of the Tee Joint according to the above illustration.
- ④ Wrench tighten all connections. Take care not to over-tighten the connections or damage may occur.

PREPARATION FOR START-UP

1. Turn on the angle valve

Turn on the Water Supply at the Stop Valve.
Check all connections for leaks.

Note: Ensure the Stop Valve is in the full open position.



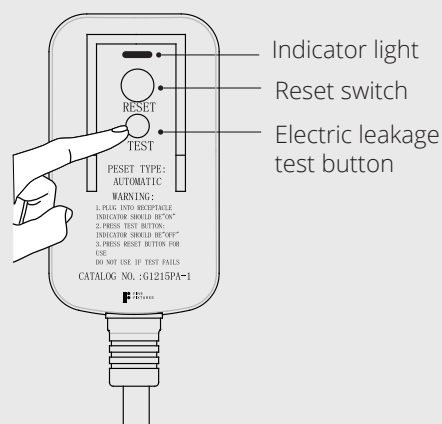
2. Power Connection

Insert the Power Adaptor into the electrical outlet. Press the Rest Switch, the indicator light on and the power adaptor will illuminate to show that the power is ON.

Tips:

Press electric leakage test button prior to usage, the reset switch pops up indicating that the leakage protection function is normal.

Press the test button (then RESET button) every month to assure proper operation.



3. Safety self-test

When the unit powers on for the first time, it will perform an Automatic Testing Routine. This routine is as follows:

The Main Unit will beep once, then the white light on the Function Knob will flash on and off, and the testing routine will begin. The light will continue to flash throughout the test. Do not use the product during this time.

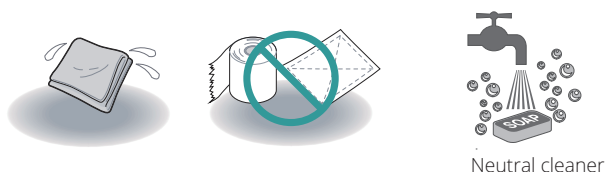
At the conclusion of the test, the flashing white light on the function knob will turn solid, signaling that the test is complete.

The Bidet Seat is now ready for use.

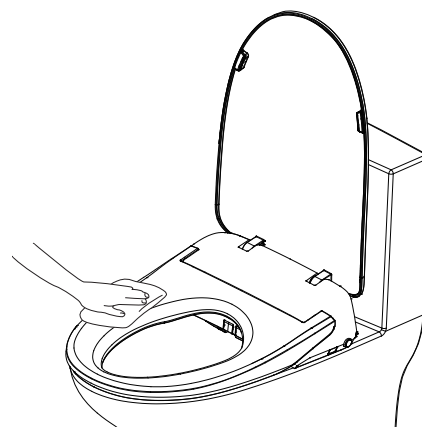
DAILY MAINTENANCE

Maintenance of Main Unit

1. Turn off the power during maintenance of this machine.
2. Wipe the dirty area with a soft cloth that is wrung out of water.
3. Once cleaning is completed and all surfaces are dry, turn on the power.



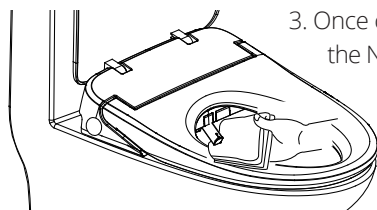
Tips: Do not rinse the surface of the product directly with water during maintenance.



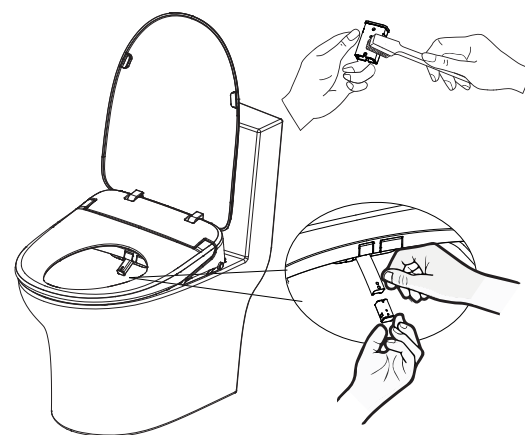
Maintenance of the Nozzle

When there is dirt on the nozzle, maintain it according to the following methods:

1. To clean the nozzle, press the Rear Cleaning button while not sitting on unit. The spray wand will extend outward to allow access for cleaning.
2. The Spray Nozzle can be removed and cleaned separately. While holding the Nozzle Housing with one hand, remove the Nozzle itself by gently pulling it towards you with the other hand.
3. Once cleaning is completed, re-install the Nozzle to the Nozzle Housing. Press the "Stop" button on the main unit to return the Nozzle Rod to its normal position.



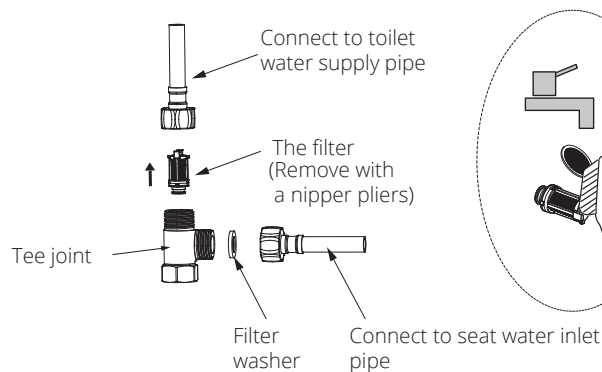
Tips: Do not pull the nozzle rod to prevent the damage of the nozzle rod and motor.



Filter Maintenance

Time for maintenance: It is under normal water pressure but poor flush performance occurs.

1. Turn off the angle valve.
2. Unscrew toilet water inlet pipe and seat water inlet pipe.
3. Take out filter and filter washer
4. Brush filter with toothbrush and clean filter
5. Re-install filter and filter washer, then re-install water inlet pipe

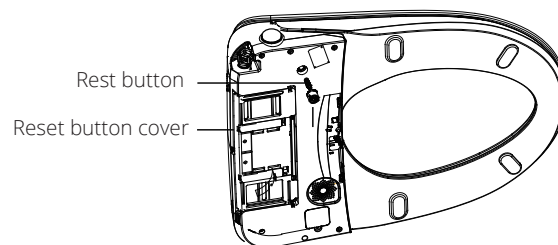


DAILY MAINTENANCE

Self-cleaning Waterway Maintenance

When the self-cleaning waterway is blocked, there is no water coming out during self-cleaning process.

1. Turn off the angle valve.
2. Unplug the Power Supply Cord from the electrical outlet.
3. Remove the Seat, press the Rest button in the middle with a flat tip screwdriver, then re-install the Seat, and turn ON the water supply at the angle valve.
4. If there is still no water coming out after pressing the Reset Button, use a flat tip screwdriver to unscrew the Rest Button Cover,



Note:
Cut off power prior to discharging the water.

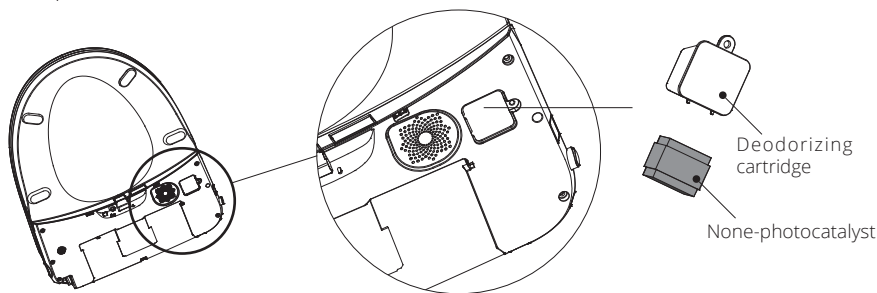
Deodorizing Device Maintenance

Remove the seat assembly.

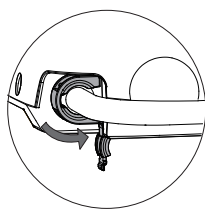
Remove the screw from the underside of unit as shown below to access the Deodorizing Cartridge.

Replacement of the Deodorizing Cartridge is recommended every 3 years.

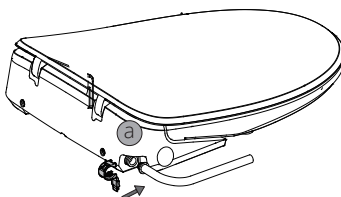
Note: It is normal for the Deodorizing Function to continue its operation after the user leaves the seat. This is to ensure complete removal of odors.



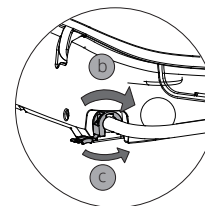
Removal and Installation of Clamp



Removal: Open the clamp cover, rotate it counterclockwise, and use a flat-blade screwdriver to pry the clamp out of the slot.



Installation: Install the quick-released connector of water inlet pipe into the main unit, and clip the clamp into the slot.



- B. Rotate the clamp until the opening faces down.
- C. Close the clamp cover.

TROUBLESHOOTING GUIDE

Problem	Cause	Solution
No Water from Nozzle	Water inlet hose bent to cause blocking	Solve the bending of water inlet hose
	Inlet valve is off	Turn on the inlet valve
	Water supply is cut off	Connect water supply and wait for the water
Weak water cleaning	Water inlet hose bent to cause blocking	Solve the bending of water inlet hose
	Water inlet valve is not fully open	Turn on the inlet valve fully
	Inlet filter blocked	Clean the filter
The water isn't hot	The water temperature is setted on normal temperature level	Reset the water temperature
Seat temperature is not hot	The seat temperature is setted on normal temperature level	Reset the seat temperature
	In standby mode	Shift to function mode for 3 minutes
Wind temperature is not hot	The wind temperature is setted on normal temperature level	Reset the wind temperature
No wind out	In standby mode or power save mode	Shift to function mode to use dry function
spray wand cannot retracted	Power off	Push back the wand lightly & wait for power
	Get stuck by impurities	Clear away the impurities
Spray wand cannot stretch out	Power off	Push back the wand lightly & wait for power
	Do not sit in sensing area	Sit right in the sensing area
Controller cannot display	The battery of the remote control is installed in the opposite direction	Reload the battery
Malfunction of deodorization	User doesn't reach the sensing area in seat	Adjust to reach the sensing area
	Deodorization function keeps working after user leaves	It's a normal phenomenon if deodorization function keeps working after user leaves to ensure eliminating smell entirely
 Caution	If the problems cannot be solved as per above methods, please shut-off the power, and contact service providers for maintenance.	
	If the leakage circuit breacker often trips off, it means the products has electricity leakage, so please shut-off the power, and contact service provider for maintenance.	

Retain these installation instructions for future reference!

Thank you for using Fine Fixtures!